



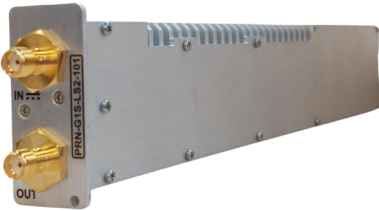
Piranha Genus Standard LNB DC injector, selectable 13/18V 22kHz, up to 500mA.

Typical applications:

- Teleports & Earth Stations
- Satellite Operations
- Government & Defence applications
- Telemetry, Tracking & Command
- High Resilience applications

LNB DC power inserter module (Bias-T) to fit Genus 1U chassis series. Provides selectable 13VDC/18VDC/22kHz tone to LNBs or similar and RF power in monitoring. Full control and monitoring of the module is possible locally through the parent chassis HMI (if fitted), or remotely via Ethernet.

DC Inserter Module



DC Inserter Module

Compact form factor allowing multiple modules to be housed in the Genus chassis. Each module occupies 1 slot in the chassis.



Variable voltage

selectable 13/18VDC, 22 kHz tone to LNBs



Hot Swap & replaceable

DC Inserter module

Chassis Options



Local control & monitoring via HMI high resolution touchscreen



Flexible Module Configurations choose from a mixture of DC inserter modules.



Resilience from dual redundant hot -swap power supplies & field replaceable CPU & HMI



Remote control & monitoring via RJ45 Ethernet port with SNMP & web browser interface



Compact indoor & outdoor chassis options, which can be part populated



Field replaceable Internal 10MHz reference source and external reference inject port with auto detection (optional)



Secure protocols with SNMPv3 and HTTPS



Indoor Chassis



Outdoor Unit





PRN LNB DC Power Inserter Module - RF Parameters				
Model Numbers	PRN-G1S-LS2-102			
Size	1 slot wide			
Capacity	Single path			
Frequency Range	850-2450 MHz			
RF Connectors	50Ω SMA	50Ω BNC	75Ω BNC	75Ω F-type
Insertion Loss (dB)	<1.5dB across full band			
Flatness (dB)	Full band	±0.40 dB		
	Any 36MHz	±0.15 dB		
Return Loss (dB)	Typ.	17 dB		
	Min.	14 dB		
Isolation	80 dB min between any two modules			
LNB Voltage	Off. 13V. 18V. 22kHz Tone on/off @ port 1. ±5% typ.			
LNB Load	Up to 500mA Maximum. Overcurrent protection: Current limited trip and restart.			
Input RF Power	+15dBm. Absolute total maximum			
Module DC Power	12 VDC. Dual redundant 12V bus, module hot swappable			
DC Consumption	12W Full Load. 2W No Load. Max consumption at a steady state.			
RF Power Detect	Range -50dBm to -10dBm total power across band. For indication only			
User Alarms	Via Chassis Ethernet/HMI/Web Interface (upper and lower limits user settable) LNB Current RF Power In			
Module Weight	0.18kg			
Module Dimensions	175mm x 45mm x 20mm maximum. PRN-G1x chassis or Genus 1U series mountable.			
Module Finish	Machined Aluminium			
MTBF	TBC			
Spec Version	1.0			

Note 1: The specification is subject to regular reviews and will be updated from time to time as part of our continuing product development and improved spec accuracy.

Note 2: Operation beyond the quoted limits stated above may cause instantaneous and permanent damage.

Note 3: All specs are for 50 Ohm connectors unless detailed otherwise.

ETL SYSTEMS LIMITED
Coldwell Radio Station
Madley
Hereford
England HR2 9NE

TELEPHONE
+44 (0)1981 259020

WEB
www.etlsystems.com

EMAIL
info@etlsystems.com

