

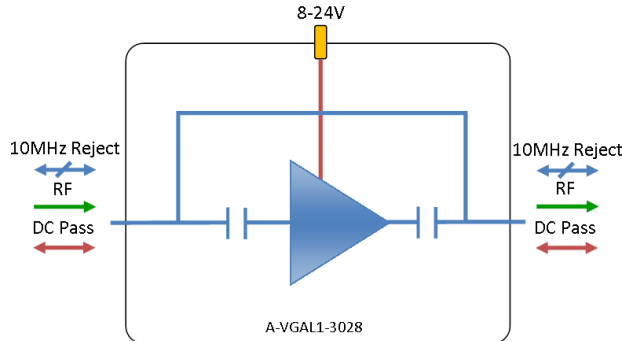


RF Components

# L-band Variable Gain Amplifier

850-2150 MHz

Model Number:  
**A-VGAL1-3028**



- DC pass and 10MHz block
- Gain selectable from 0 to 30dB in 1dB steps
- Requires 8-24V for external Bias

Available with RF connector options:

- 50  $\Omega$  SMA
- 50  $\Omega$  N-type
- 50  $\Omega$  BNC
- 75  $\Omega$  BNC
- 75  $\Omega$  F-type

### Compact

Housed in rugged compact enclosure

### Flexible Mounting

Tapped screw & through hole mounting options

### 8-24V

External DC powering

### 850-2150 MHz

Operating frequency range.

RF Parameters					
A-VGAL1-3028	S5S5	N5N5	B5B5	B7B7	F7F7
Frequency Range	850-2150 MHz				
RF Connectors	50 $\Omega$ SMA	50 $\Omega$ N-Type	50 $\Omega$ BNC	75 $\Omega$ BNC	75 $\Omega$ F-Type
Gain (dB)	0-30	0-30	0-30	0-30	0-30
Flatness $\pm$ (dB)	0.3	0.3	0.4	0.6	0.8
Input Return Loss (dB)	15	15	14	10	10
	12	12	12	8	8
Output Return Loss (dB)	15	15	14	10	10
	12	12	12	8	8
Output P1dB GCP** (dBm)	18	18	18	18	18
	15	15	15	15	15
Output IP3 (dBm)	27	27	27	27	27
Noise Figure (dB)	12	12	12	12	12
**Gain Compression Point					

### Broadcast



### Marine Oil & Gas



### SNG & VSAT



### Satellite Teleport





RF Components

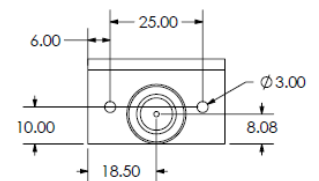
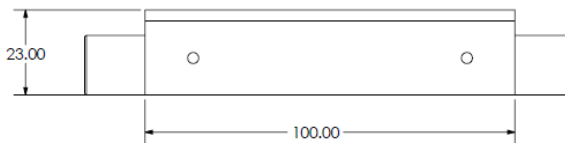
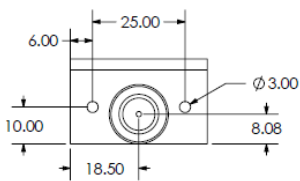
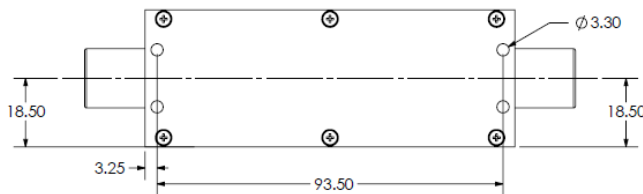
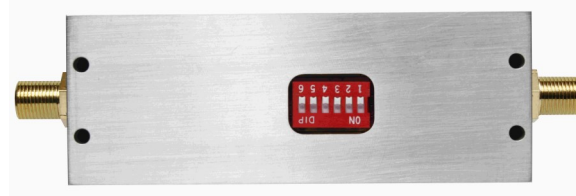
# Model Number: A-VGAL1-3028 L-band Variable Gain Amplifier

Environmental		
Operating Temperature		0°C to +55°C
Storage Temperature		-20°C to +75°C
Location		Indoor use Only
Humidity	Max	85% non-condensing
Altitude	Max	10,000 feet above mean sea level

Max Operating Parameters		
Input RF Power		16 dBm (40mW)
DC Voltage		35V on RF ports, 30V on DC Bias
DC Current	Max	2A Max
DC Consumption		200 mA Max 160 mA Typ

**!** Operation beyond these limits may cause instantaneous and permanent damage.

## Physical Dimensions (mm)



Gain Settings							
Switch Settings	1	2	3	4	5	6	Other Features
Attenuation	16	8	4	2	1	n/a	Attenuation settings when the selected switch is at ON state
Max Gain	1	1	1	1	1	n/a	Max gain (0dB attenuation setting)
Min Gain	0	0	0	0	0	n/a	Min gain (31dB attenuation setting)

Note: The specification is subject to regular reviews and will be updated from time to time as part of our continuing product development and improved specification accuracy.

ETL SYSTEMS LIMITED  
Coldwell Radio Station  
Madley  
Hereford  
England HR2 9NE

TELEPHONE  
+44 (0)1981 259020  
  
EMAIL  
info@etlsystems.com

FACSIMILE  
+44 (0)1981 259021  
  
WEB  
www.etlsystems.com

