

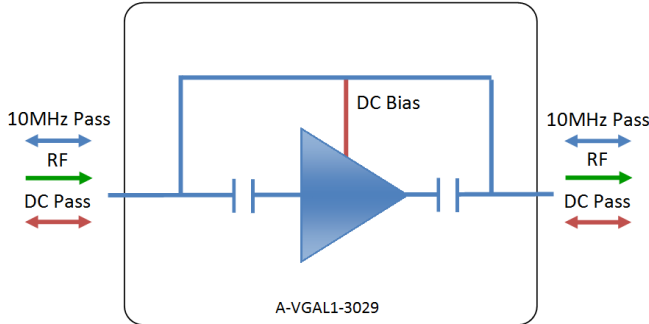


RF Components

L-band Variable Gain Amplifier

850-2150 MHz

Model Number:
A-VGAL1-3029



- Flat frequency versus gain characteristics
 - DC and 10MHz pass
 - Gain selectable from 0 to 30dB
 - Requires 8-24V on either port for inline Bias
- Available with RF connector options:
- 50 Ω SMA
 - 50 Ω N-type
 - 50 Ω BNC
 - 75 Ω BNC
 - 75 Ω F-type

Compact

Housed in rugged compact enclosure

Flexible Mounting

Tapped screw & through hole mounting options

8-24V

External DC powering

850-2150 MHz

Operating frequency range.

RF Parameters					
A-VGAL1-3029	S5S5	N5N5	B5B5	B7B7	F7F7
Frequency Range	850-2150 MHz				
RF Connectors	50Ω SMA	50Ω N-Type	50Ω BNC	75Ω BNC	75Ω F-Type
Gain (dB)	0-30	0-30	0-30	0-30	0-30
Flatness ± (dB)	0.3	0.3	0.4	0.6	0.8
Input Return Loss (dB)	15	15	12	10	10
	10	10	10	8	8
Output Return Loss (dB)	15	15	12	10	10
	10	10	10	8	8
Output P1dB GCP** (dBm)	18	18	18	18	18
	15	15	15	15	15
Output IP3 (dBm)	27	27	27	27	27
Noise Figure (dB)	12	12	12	12	12

**Gain Compression Point

Broadcast



Marine Oil & Gas



SNG & VSAT



Satellite Teleport





RF Components

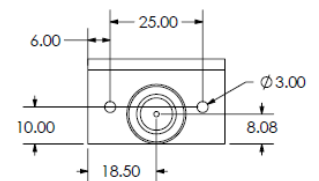
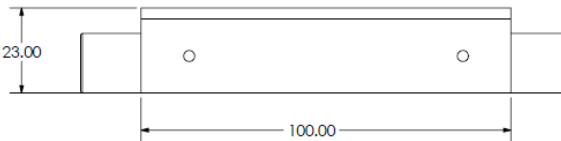
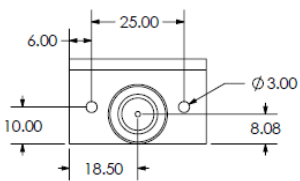
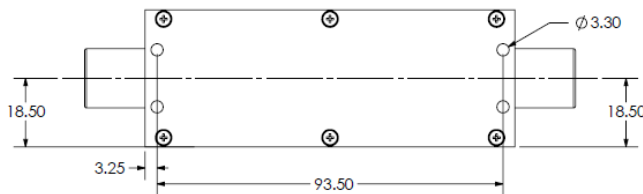
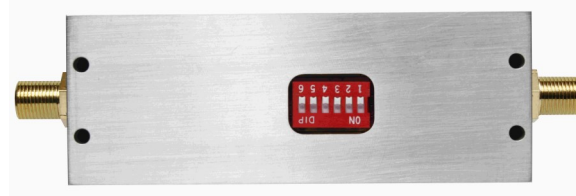
Model Number: A-VGAL1-3029 L-band Variable Gain Amplifier

Environmental		
Operating Temperature		0°C to +55°C
Storage Temperature		-20°C to +75°C
Location		Indoor use Only
Humidity	Max	85% non-condensing
Altitude	Max	10,000 feet above mean sea level

Max Operating Parameters	
Input RF Power	16 dBm (40mW)
DC Voltage	35V on RF ports, 30V on DC Bias
DC Consumption	200 mA Max 160 mA Typ

! Operation beyond these limits may cause instantaneous and permanent damage.

Physical Dimensions (mm)



Gain Settings							
Switch Settings	1	2	3	4	5	6	Other Features
Attenuation	N/A	1	2	4	8	16	Attenuation settings when the selected switch is at ON state
Max Gain	1	1	1	1	1	n/a	Max gain (0dB attenuation setting)
Min Gain	0	0	0	0	0	n/a	Min gain (31dB attenuation setting)

Note: The specification is subject to regular reviews and will be updated from time to time as part of our continuing product development and improved specification accuracy.

ETL SYSTEMS LIMITED
Coldwell Radio Station
Madley
Hereford
England HR2 9NE

TELEPHONE
+44 (0)1981 259020

EMAIL
info@etlsystems.com

FACSIMILE
+44 (0)1981 259021

WEB
www.etlsystems.com

