

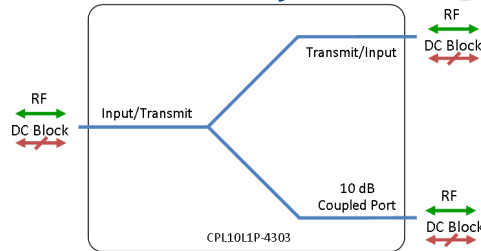


Model Number:
CPL10L1P-4303

RF Components

10dB L-band Proximity Coupler

850 MHz to 2450 MHz



- All ports DC blocked.

Available with RF connector options:

- 50 Ω SMA
- 50 Ω N-type
- 50 Ω BNC
- 75 Ω BNC
- 75 Ω F-type.



850-2450 MHz
Operating frequency range.



Compact

Housed in rugged compact enclosure

Flexible Mounting

Tapped screw & through hole mounting options

RF Parameters						
CPL10L1P-4303-XXXXXX	S5S5S5	N5N5N5	B5B5B5	B7B7B7	F7F7F7	
Frequency Range	850 - 2450 MHz					
RF Connectors	50Ω SMA	50Ω N-Type	50Ω BNC	75Ω BNC	75Ω F-Type	
Through Path :						
Mean Insertion Loss (dB)	1.8 ± 0.2	1.8 ± 0.2	1.8 ± 0.3	1.9 ± 0.4	1.9 ± 0.4	
Flatness (dB)	± 0.2	± 0.2	± 0.3	± 0.4	± 0.4	
Input Return Loss (dB)	Typ	15	15	15	14	14
	Min	13	13	13	12	12
Output Return Loss (dB)	Typ	14	14	14	14	14
	Min	11	11	11	11	11
Coupled Port :						
Coupling Factor	Typ	10 ± 0.5	10 ± 0.5	10 ± 0.5	10 ± 1.0	10 ± 1.0
Flatness (dB)	Typ	± 0.2	± 0.2	± 0.3	± 0.4	± 0.4
Return Loss (dB)	Typ	14	14	14	14	14
	Min	11	11	11	11	11
10MHz Insertion Loss is up to 3dB above the theoretical loss* 10MHz Rejection is 20dB* *To ports which are applicable						

Broadcast



Marine Oil & Gas



SNG & VSAT



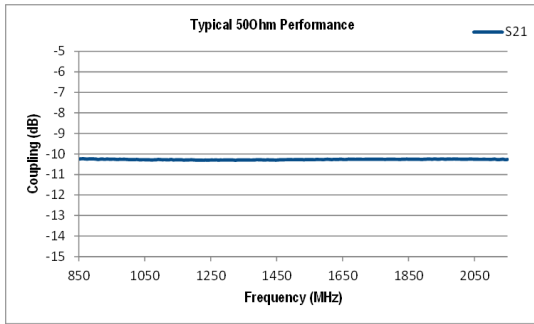
Satellite Teleport



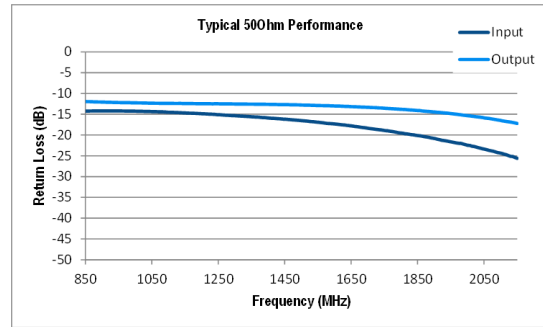


RF Components

Model Number:
CPL10L1P-4303
10dB L-band Proximity Coupler



Coupling (dB)



Return Loss (dB)

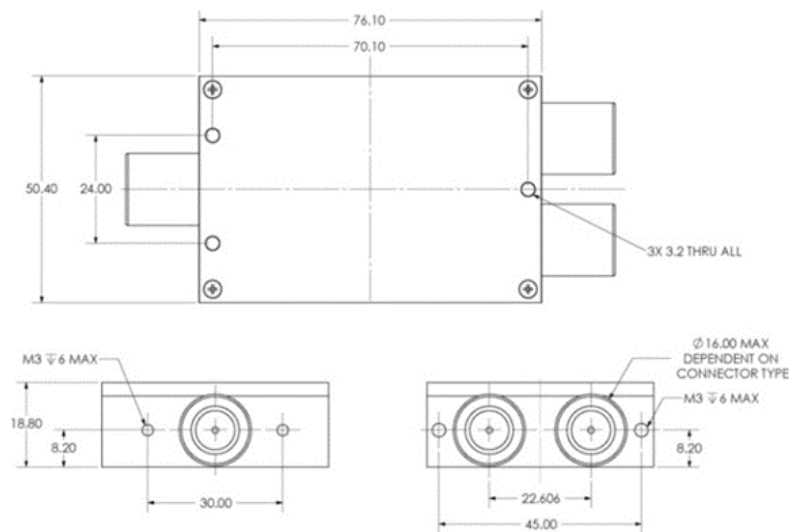
Technical specifications and operating parameters

Environmental		
Operating Temperature		0°C to +45°C
Storage Temperature		-20°C to +75°C
Location		Indoor use Only
Humidity	Max	85% non-condensing
Altitude	Max	10,000 feet

Max Operating Parameters	
Input RF Power	+37 dBm (5W)
DC Voltage	50V on any RF port

! Operation beyond these limits may cause instantaneous and permanent damage.

Physical Dimensions (mm)



Note: The specification is subject to regular reviews and will be updated from time to time as part of our continuing product development and improved specification accuracy.

ETL SYSTEMS LIMITED
Coldwell Radio Station
Madley
Hereford
England HR2 9NE

TELEPHONE
+44 (0)1981 259020

EMAIL
info@etlsystems.com

FACSIMILE
+44 (0)1981 259021

WEB
www.etlsystems.com