

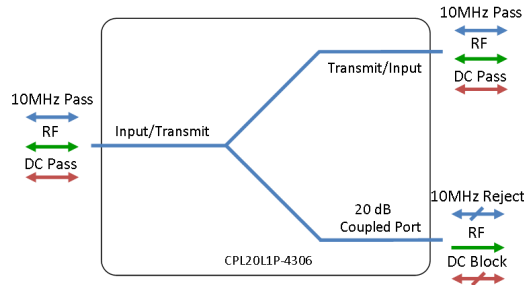


Model Number:
CPL20L1P-4306

RF Components

20dB L-band Directional Coupler

850 - 2150 MHz



- DC and 10MHz pass between input and through ports.
- DC and 10MHz blocked on coupled port.

Available with RF connector options:

- 50 Ω SMA
- 50 Ω N-type
- 50 Ω BNC
- 75 Ω BNC
- 75 Ω F-type.



850-2150 MHz
Operating frequency range. L-Band ready



Compact
Housed in rugged compact enclosure

Flexible Mounting
Tapped screw & through hole mounting options

RF Parameters					
CPL20L1P-4306	S5S5S5	N5N5N5	B5B5B5	B7B7B7	F7F7F7
Frequency Range	850 – 2150 MHz				
RF Connectors	50Ω SMA	50Ω N-Type	50Ω BNC	75Ω BNC	75Ω F-Type
Through Path :					
Mean Insertion Loss (dB) Max	1.1	1.1	1.3	1.5	1.5
Flatness (dB)	± 0.4	± 0.4	± 0.6	± 0.8	± 0.8
Input Return Loss (dB)	Typ	20	18	18	14
	Min	15	14	14	8
Output Return Loss (dB)	Typ	20	18	18	14
	Min	15	14	14	8
Coupled Port :					
Mean Coupling Factor (dB)	20 ± 1.0	20 ± 1.5	20 ± 1.5	20 ± 1.5	20 ± 1.5
Flatness (dB) Max	± 1.5	± 1.5	± 1.5	± 1.5	± 1.5
Return Loss (dB)	Typ	20	18	18	14
	Min	15	14	14	8
Directivity (dB) Typ	14	14	14	14	14
10MHz Insertion Loss is up to 3dB above the theoretical loss* 10MHz Rejection is 20dB* *To ports which are applicable					

Broadcast



Marine Oil & Gas



SNG & VSAT



Satellite Teleport

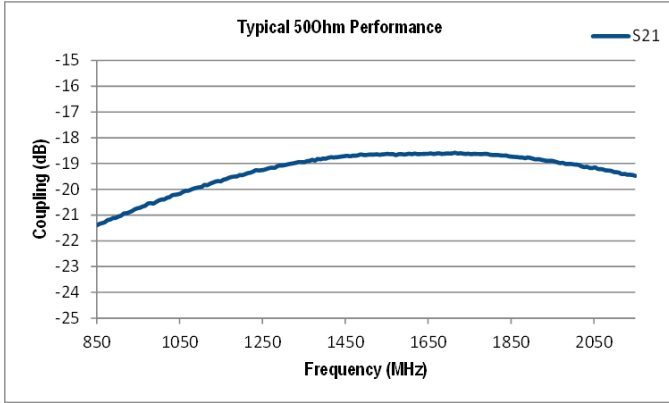




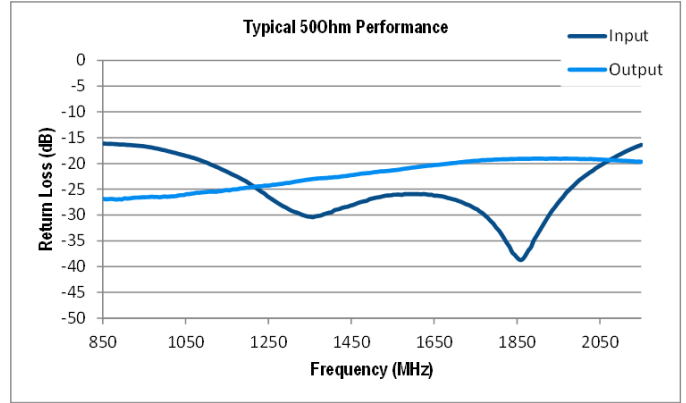
RF Components

Model Number:
CPL20L1P-4306
20dB L-band Directional Coupler

Technical specifications and operating parameters



Coupling (dB)



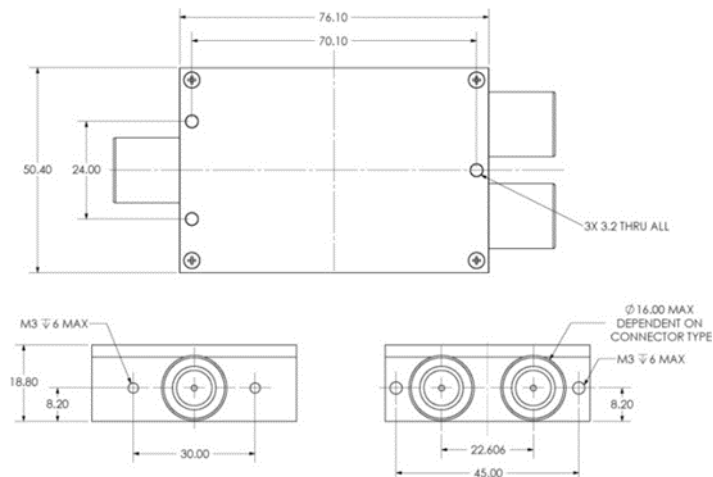
Return Loss (dB)

Environmental		
Operating Temperature		0°C to +45°C
Storage Temperature		-20°C to +75°C
Location		Indoor use Only
Humidity	Max	85% non-condensing
Altitude	Max	10,000 feet

Max Operating Parameters	
Input RF Power	+37 dBm (5W)
DC Voltage	50V
DC Current	3A max

! Operation beyond these limits may cause instantaneous and permanent damage.

Physical Dimensions (mm)



Note: The specification is subject to regular reviews and will be updated from time to time as part of our continuing product development and improved specification accuracy.

ETL SYSTEMS LIMITED
Coldwell Radio Station
Madley
Hereford
England HR2 9NE

TELEPHONE
+44 (0)1981 259020

EMAIL
info@etlsystems.com

FACSIMILE
+44 (0)1981 259021

WEB
www.etlsystems.com

