



Model Number:
SWC-SP6T3P05A162006S

RF Components

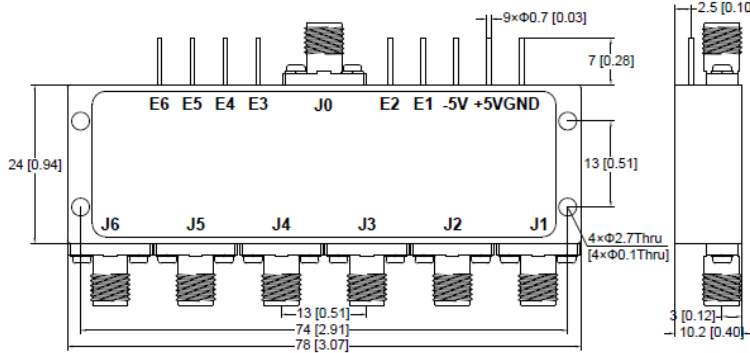
PIN Diode Absorptive Switch

2 - 18 GHz

- Single pole six throw PIN diode absorptive switch
- TTL control

Available with RF connector options:

- 50 Ω SMA



Switch

RF Parameters		
SWC-SP6T3P05A162006S		
Frequency Range	2 - 18 GHz	
RF Connectors	50Ω SMA Female	
Insertion Loss (dB)	Max	4.2
Switching Speed (nsec)	Max	120
VSWR	Max	2.0:1
Isolation (dB)	Min	60

Switching speed is defined as 50% TTL to 90% RF (t-on) and 50% TTL to 10% RF (t-off).

Absolute Maximum Ratings	
Biasing	+5V, -5V
DC Bias	+5V@300mA max -5V@50mA max
TTL Control Voltage	+5V/ 0V
Input RF power	+30dBm

Environmental	
Operating Temperature	-45°C to +85°C
Storage Temperature	-55°C to +125°C
Vibration	25g rms (15 degree 2KHz)
Humidity	Max 100% RH at 35°C, 95% RH at 40°C
Shock	20G for 11msc

Truth Table						
Control Input TTL						Signal Path State
E6	E5	E4	E3	E2	E1	
1	1	1	1	1	0	J0-J1
1	1	1	1	0	1	J0-J2
1	1	1	0	1	1	J0-J3
1	1	0	1	1	1	J0-J4
1	0	1	1	1	1	J0-J5
0	1	1	1	1	1	J0-J6

Broadcast



Marine Oil & Gas



SNG & VSAT



Satellite Teleport

