



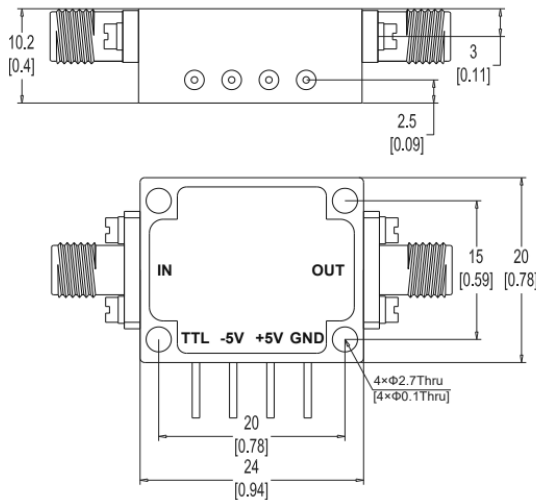
# Absorptive SPST Pin Switch

## 2-8 GHz

### RF Connectors

- 50Ω SMA Female

Physical Dimensions (±0.1mm)



| Control Input<br>TTL | Signal Path<br>States |
|----------------------|-----------------------|
| TTL                  |                       |
| 0                    | ON                    |
| 1                    | OFF                   |

| General Specification  |  |
|------------------------|--|
| Frequency Range        | 2 - 8 GHz  |
| Insertion Loss         | 1.5 dB max.                                      |
| VSWR                   | 1.5 max.   |
| Isolation              | 80 dB min.                                       |
| Switching Speed        | 100 nsec max.                                    |
| CW RF Power, Operating | 30 dBm max.                                      |
| DC Bias                | +5 V±0.5 V @ 50 mA max<br>-5 V±0.5 V @ 50 mA max |
| TTL Control Voltage    | +5V/0V   |
| Input RF power         | +30dBm   |
| Vibration              | 25g rms (15 degree 2KHz)                         |

| Environmental Specification |                                   |
|-----------------------------|-----------------------------------|
| Operating Temperature       | -45°C to +85°C                    |
| Storage Temperature         | -55°C to +125°C                   |
| Environment                 | Indoor                            |
| Humidity                    | 100% RH at 35c, 95%RH at 40 deg c |
| Shock                       | 20G for 11msec                    |

| Mechanical Specification |                               |
|--------------------------|-------------------------------|
| RF Connectors            | 50Ω SMA Female                |
| Dimensions               | 24 x 20 x 10.2mm (excl conns) |
| Material                 | Aluminium                     |
| Finish                   | Gold Plating                  |

Note 1: The specification is subject to regular reviews and will be updated from time to time as part of our continuing product development and improved spec accuracy.  
 Note 2: Operation beyond the quoted limits stated above may cause instantaneous and permanent damage.  
 Note 3: Switching speed is defined as 50% TTL to 90% RF (t-on) and 50% TTL to 10% RF (t-off).

